

A collection of colorful, knitted socks hanging from several wooden branches in a room with a window and a blue lace-trimmed chair.

**ROGUE KNIT**

Milliken™

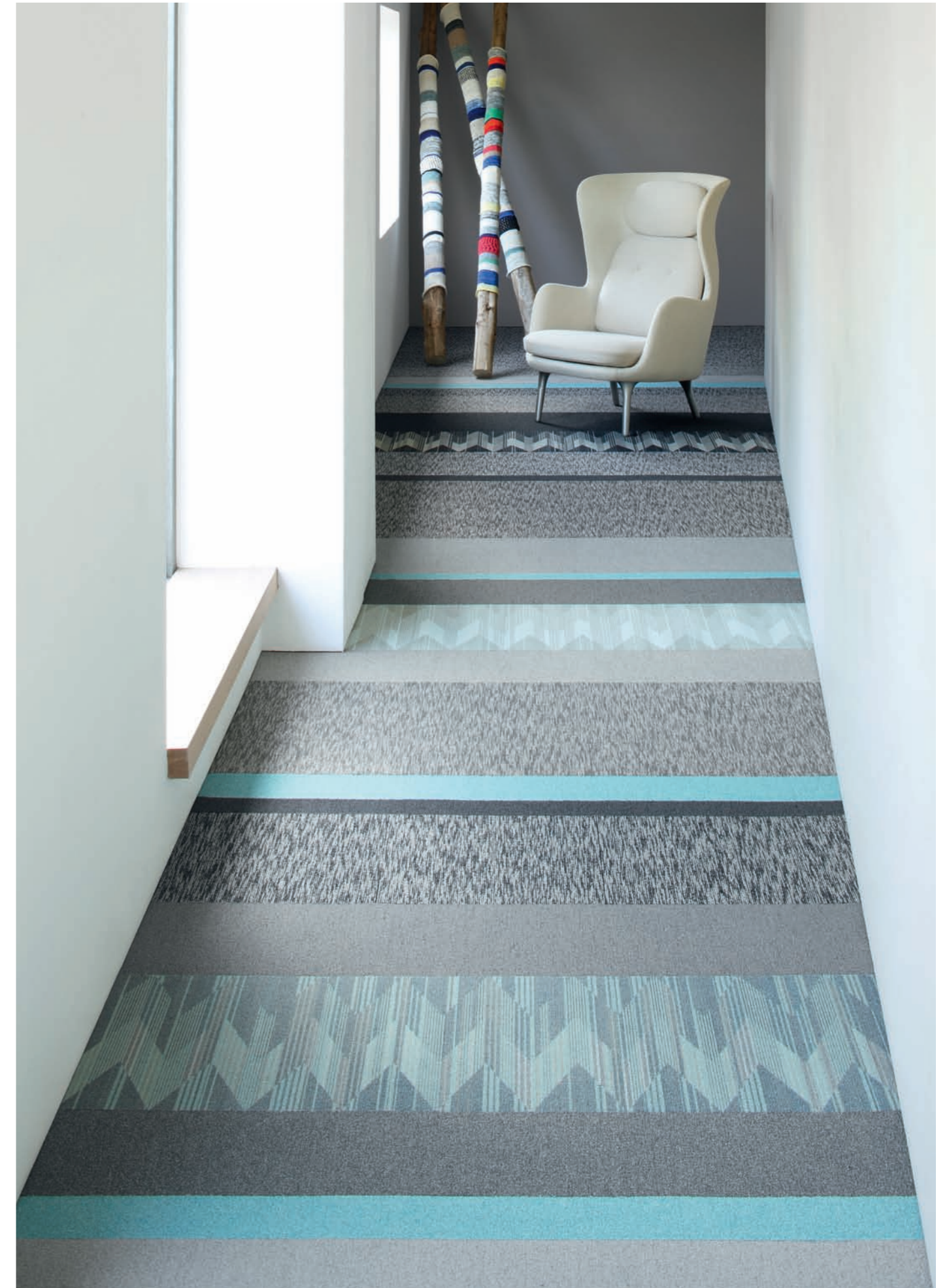




## INSPIRED. INSPIRING.

Artistic forces take over the creative process and intercept our inspiration, taking us down a slightly rebellious path to a more adventurous destination.

Rogue Knit combines the artistry of hand-knit textures with unexpected colour combinations and finely crafted pattern. Advanced technology reinterprets the nostalgic beauty of a favourite pullover with a vibrant new kinetic energy.



◀ RKT27-152 My Pullover

▲ Rogue Knit RKT120-171, RKT27-152, Fixation Bespoke Formwork FWK152, FWK140, FWK67, FWK171, FWK27, FWK13, FWK25, FWK6





RKT124-121 Sheep Dipped



RKT120-171 Spool Knit



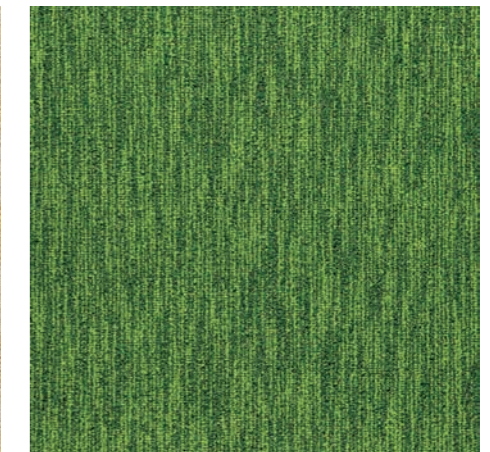
RKT27-152 My Pullover



RKT66-107-137 Knitty-Gritty



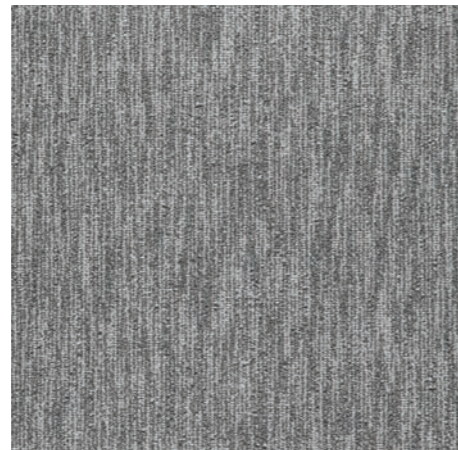
RKT111-134-121 Cashmere Summer



RKT74-141 Sock Yarn



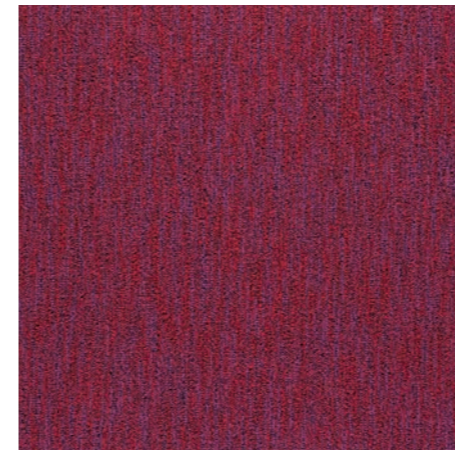
RKT94-122 Cable Guy



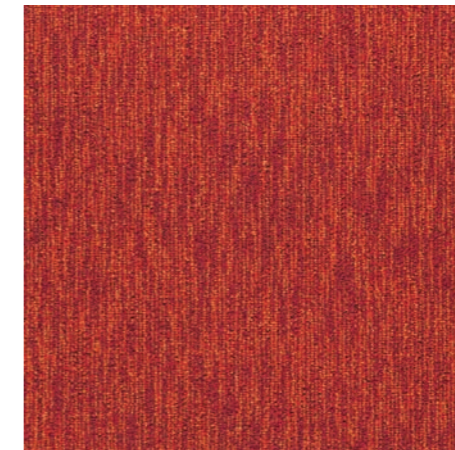
RKT25-06 Granny Chic



RKT79-06 Crochet Hook



RKT109-107-137 Darn It!



RKT109-102 Bobbin Glow



RKT126-140 Bluesky Alpaca



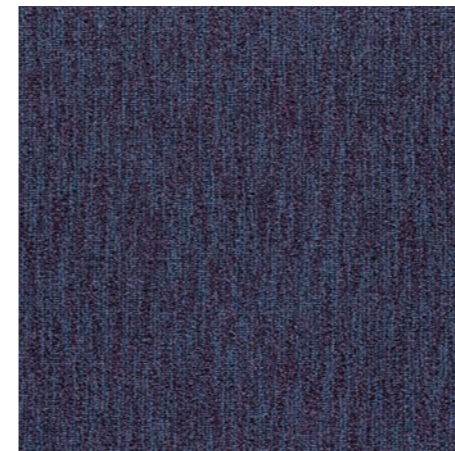
RKT59-171 Spinning Jenny



RKT133-67 Broomstick Lace



RKT182-06 Seasilk Purl



RKT66-182 Fuzzy Mohair



RKT109-169 Yarn Bomb



RKT182-126 Midnight Knitter

**Full tiles shown**  
For full technical specification  
see page 6

**Illustration de dalles entieres**  
Pour les specifications  
techniques completes voyez  
page 6

**Volle Fliesen abgebildet**  
Für weitere technische  
Informationen siehe Seite 6

**Muestras de loseta entera**  
Para especificaciones tecnicas  
completas vea pagina 6

**Full tiles shown**  
For full technical specification  
see page 6

**Illustration de dalles entieres**  
Pour les specifications  
techniques completes voyez  
page 6

**Volle Fliesen abgebildet**  
Für weitere technische  
Informationen siehe Seite 6

**Muestras de loseta entera**  
Para especificaciones tecnicas  
completas vea pagina 6







Cover image:  
Photography by **Julie Ansiau**  
and **Aurélie Mathigot**



**SAMPLE HOTLINE +44(0)1942 612 803**

**CUSTOMER SERVICE**

T +44 (0)1942 612 777 | [carpetenquiries@milliken.com](mailto:carpetenquiries@milliken.com)  
Beech Hill Plant, Gidlow Lane, Wigan WN6 8RN, England

**LONDON STUDIO**

T +44 (0)20 7336 7290  
5 Berry Street, Clerkenwell, London EC1V 0AA, England

[www.millikencarpet.com](http://www.millikencarpet.com)