



**World
Textiles**

Interface FLOR

World Textiles

A whole world of colour, texture & design

Introducing World Textiles – with the distinctive look and feel of far-off countries and cultures. From the recycled content used in its production, to its incredible durability and flexibility, combined with wide ranging colour and texture – World Textiles brings design integrity home.

1
The Orient
Introducing the subtlety of The Orient
pg. 4

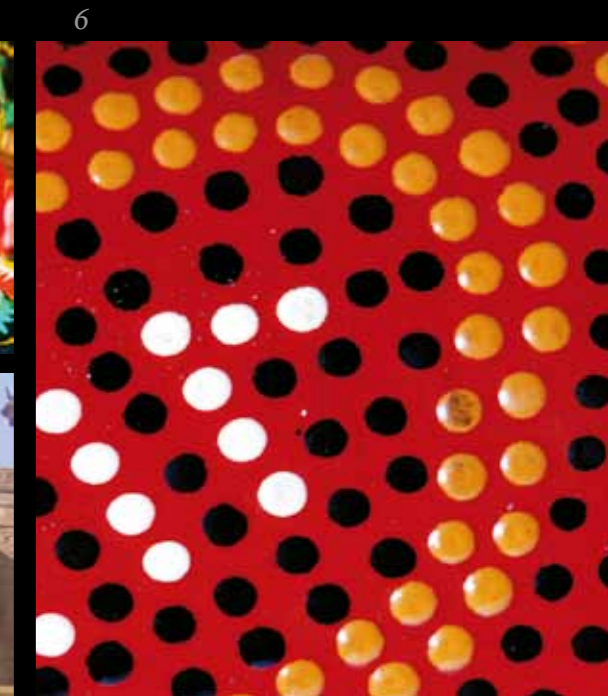
2
On Safari
Bringing Africa to you
pg. 26

3
Latin Fever
Discover the vibrancy of Latin America
pg. 46

4
Folklore
A rich tapestry from eastern Europe
pg. 60

5
Eastern Delights
Inspired by the opulence of the East
pg. 72

6
Tribal Rhythms
The Spirit of Tribal Rhythms
pg. 82



The Orient

Introducing the subtlety of The Orient

Delicate flower motifs and intricate kimono embroidery.
Luxurious fabrics and subtle stone gardens. Our exotic
Orient range oozes with Far Eastern influences.



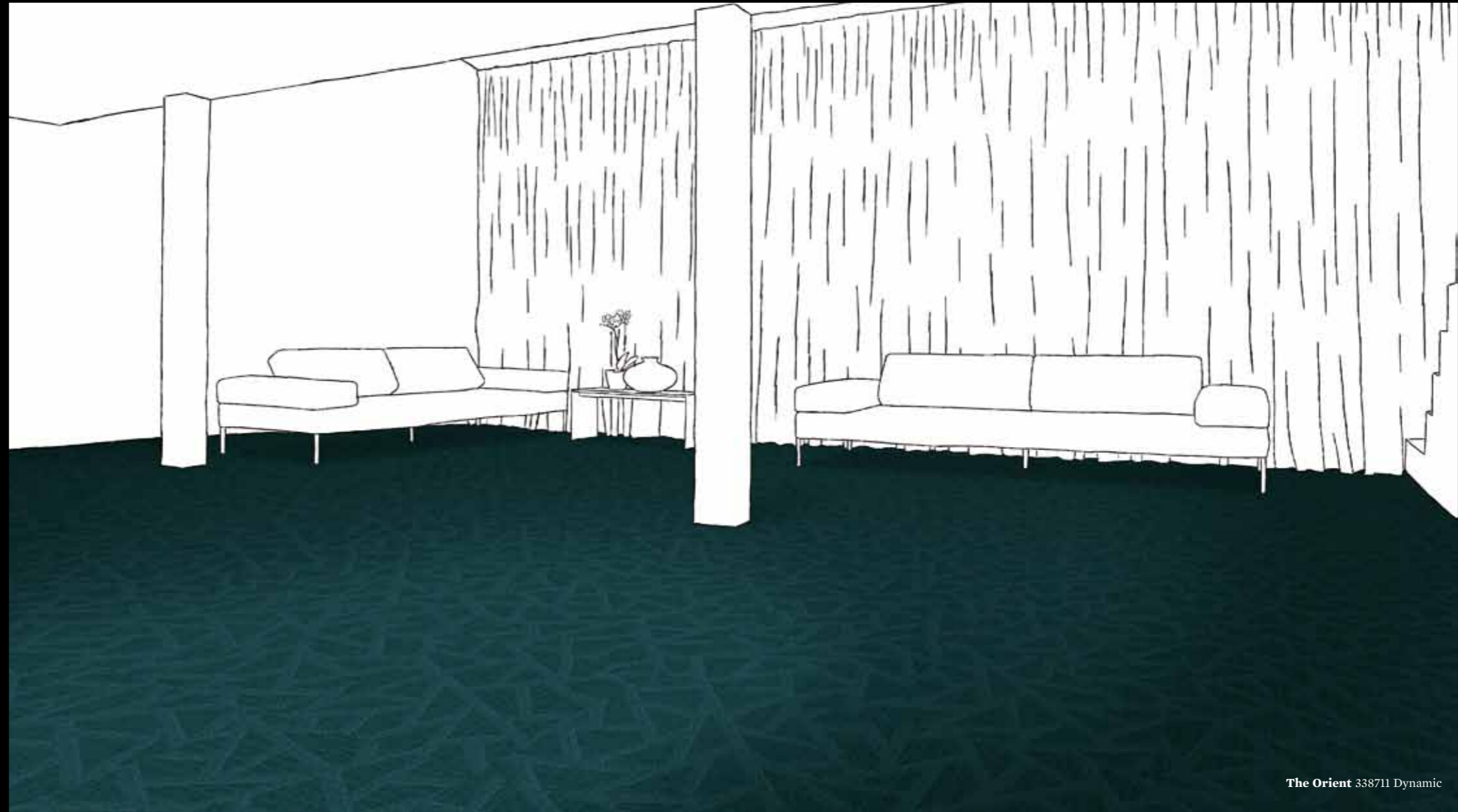


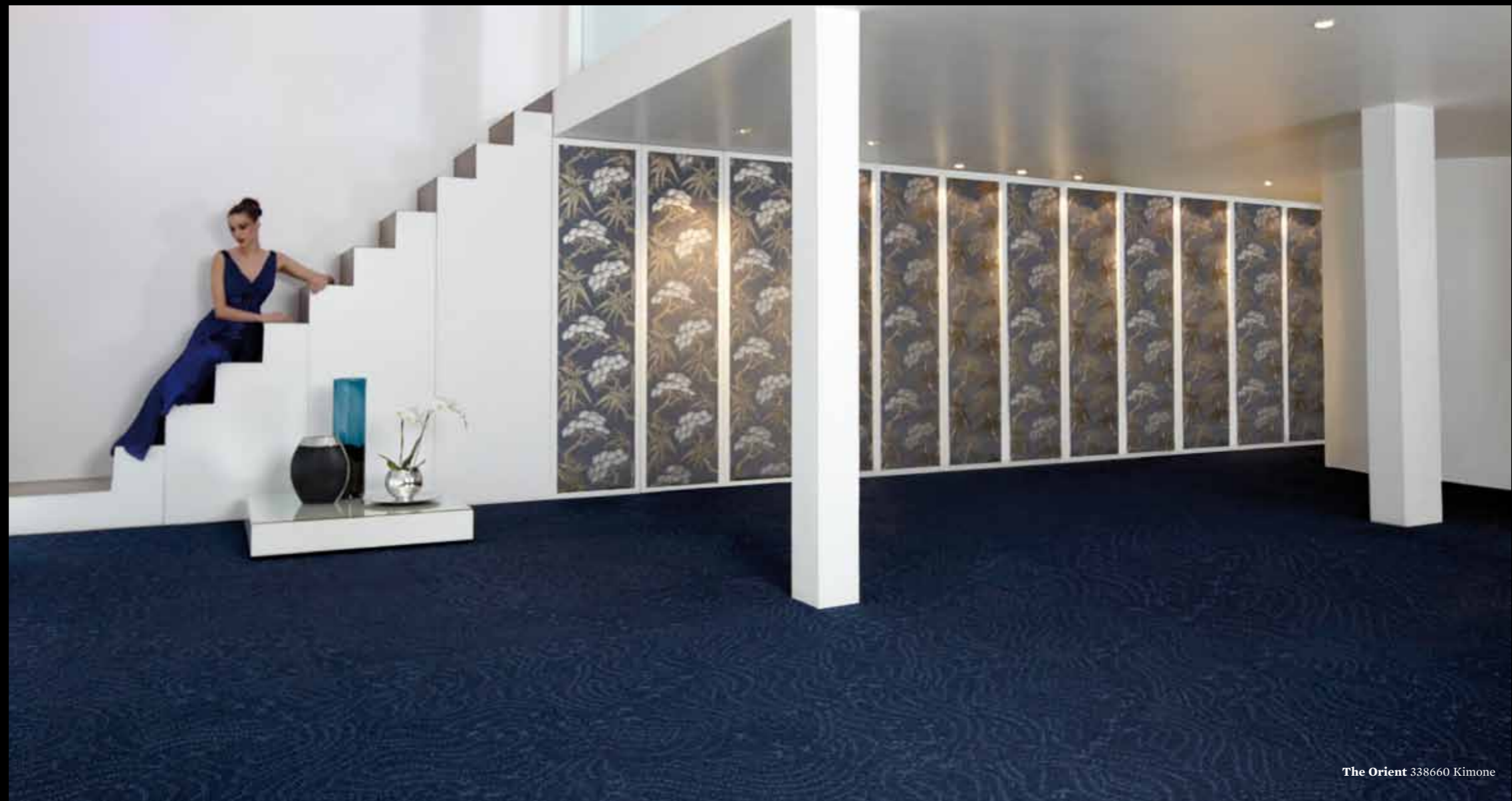




The Orient 338692 Kabuki & 338682 Celestial

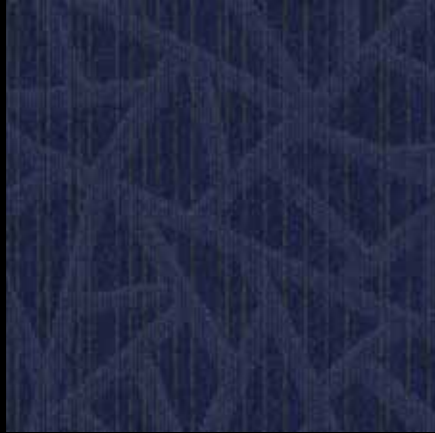








The Orient 338660 Kimone



338710 Dynamic



338711 Dynamic



338712 Dynamic



338713 Dynamic



338680 Celestial



338681 Celestial



338682 Celestial



338683 Celestial



338670 Bonsai



338671 Bonsai



338672 Bonsai



338673 Bonsai



338690 Kabuki



338691 Kabuki



338692 Kabuki



338693 Kabuki



338700 Chi



338701 Chi



338702 Chi



338703 Chi



338660 Kimone



338661 Kimone



338662 Kimone



338663 Kimone

On Safari

Bringing Africa to you

The warm, earthy colours of the Sahara. The bold patterns of African Mud Cloth. We've captured the spirit of Africa in our new On Safari range.





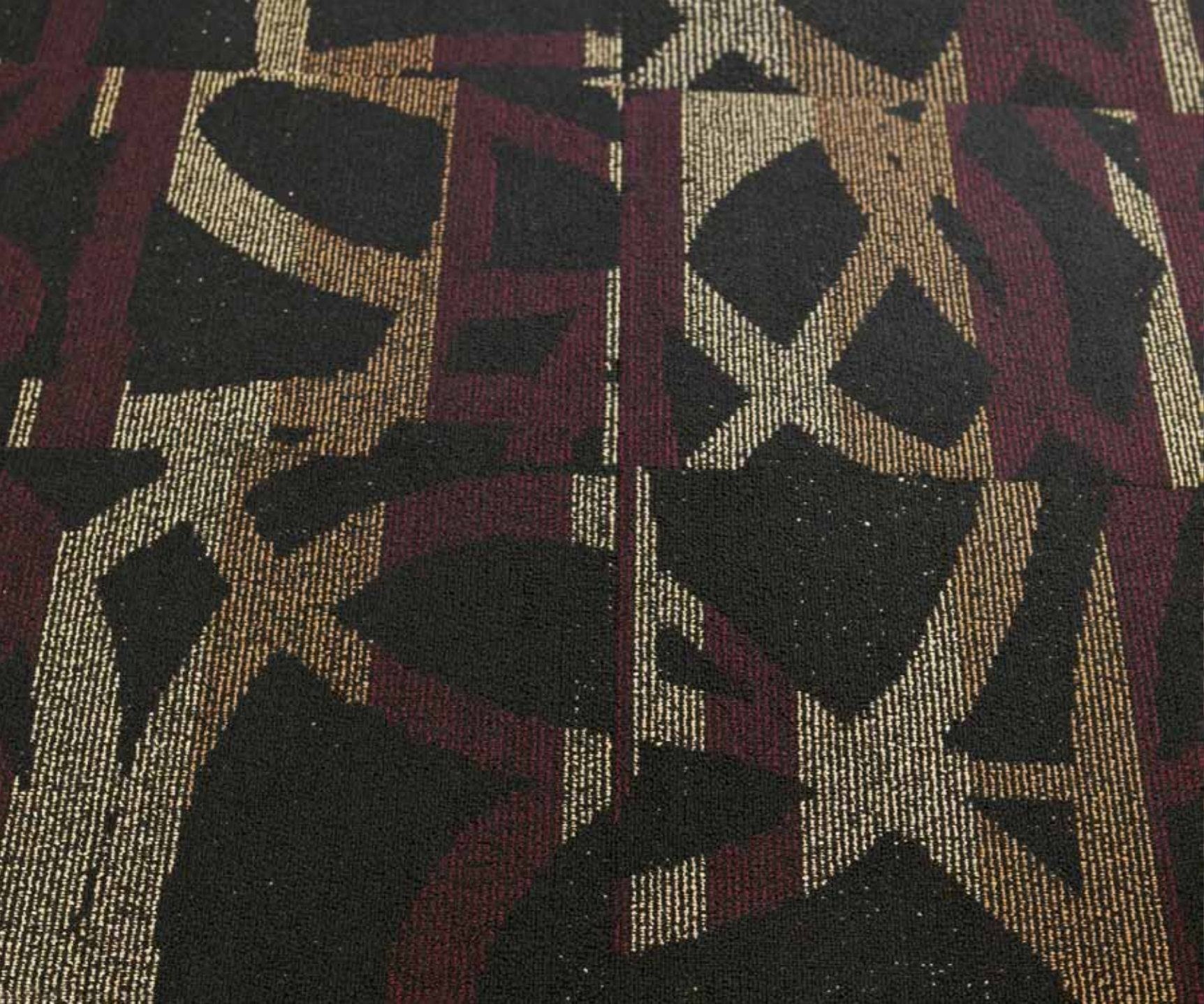
On Safari 338503 Mud Cloth & 338546 Yoruba

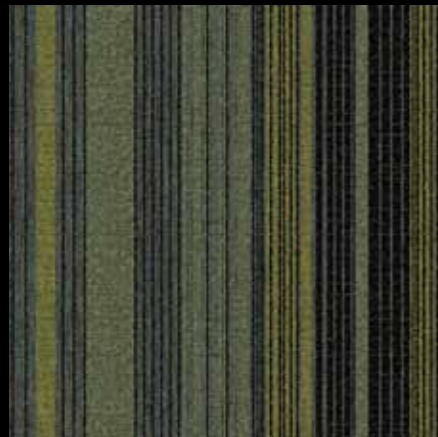






On Safari 338554 Mbuti





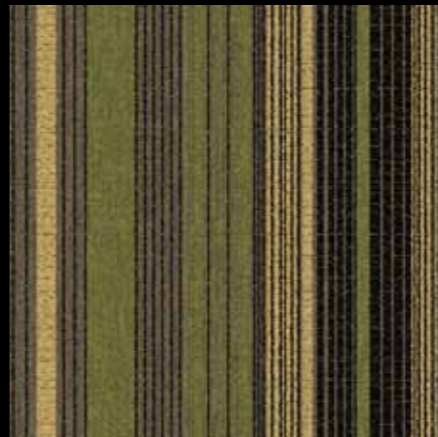
338540 Yoruba



338542 Yoruba



338544 Yoruba



338541 Yoruba



338543 Yoruba



338545 Yoruba



338546 Yoruba



338548 Yoruba



338547 Yoruba



338549 Yoruba



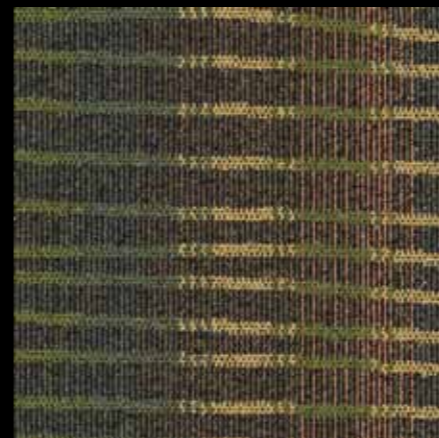
338510 Bamana



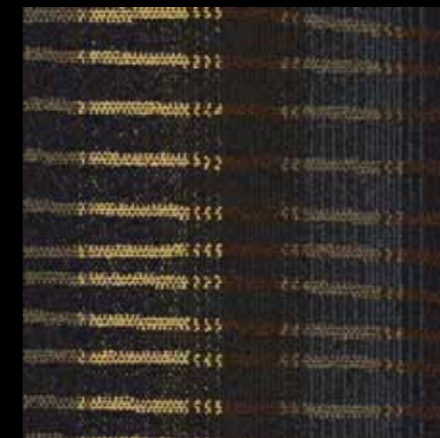
338511 Bamana



338512 Bamana



338500 Mali



338501 Mali



338502 Mali



338513 Bamana



338514 Bamana



338503 Mali



338504 Mali



338520 Mud Cloth



338521 Mud Cloth



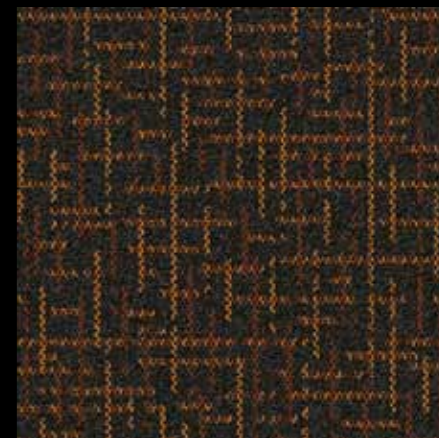
338522 Mud Cloth



338530 Kente



338531 Kente



338532 Kente



338523 Mud Cloth



338524 Mud Cloth



338533 Kente



338534 Kente



338550 Mbuti



338551 Mbuti



338552 Mbuti



338560 Barkcloth



338561 Barkcloth



338562 Barkcloth



338553 Mbuti



338554 Mbuti



338563 Barkcloth



338564 Barkcloth

Latin Fever

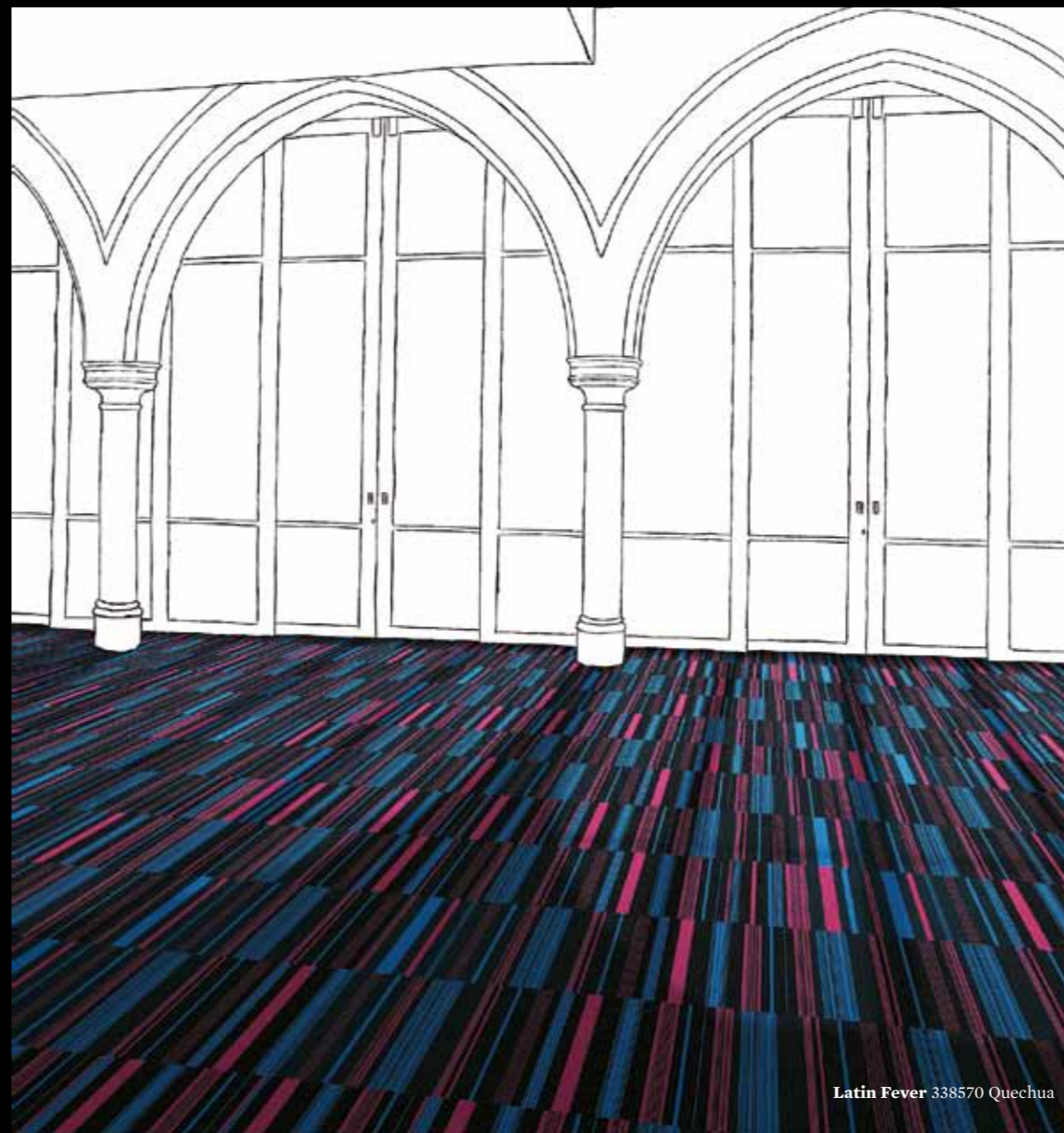
Discover the vibrancy of Latin America

We've brought the carnival atmosphere of Latin America to life in the vivid colours, woven textures and striped patterns of our Latin Fever range.











Latin Fever 338590 Chuspa



338570 Quechua



338571 Quechua



338574 Quechua



338575 Quechua



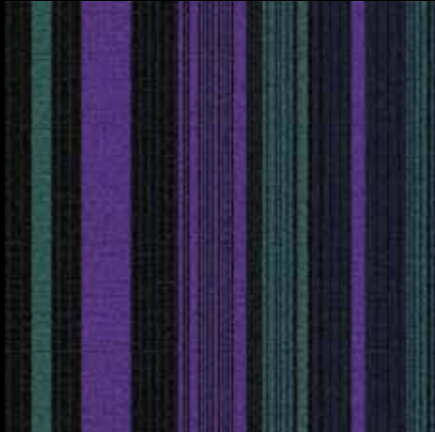
338572 Quechua



338573 Quechua



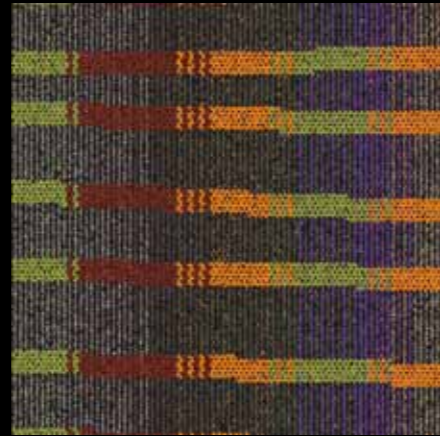
338576 Quechua



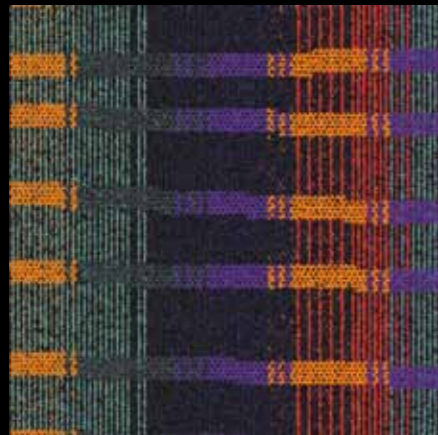
338577 Quechua



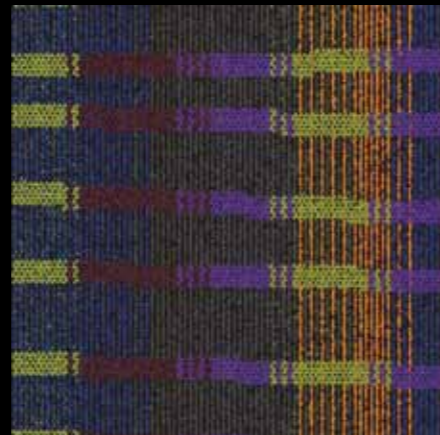
338580 Manta



338581 Manta



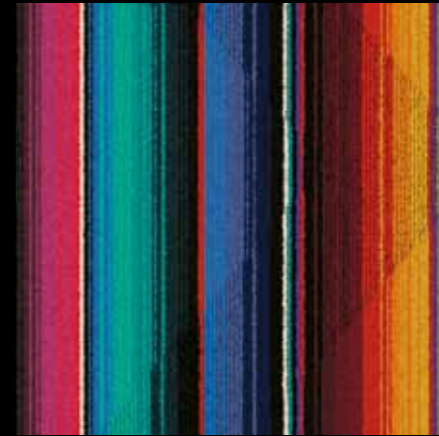
338582 Manta



338583 Manta



338600 Ayacucho



338590 Chuspa

Folklore

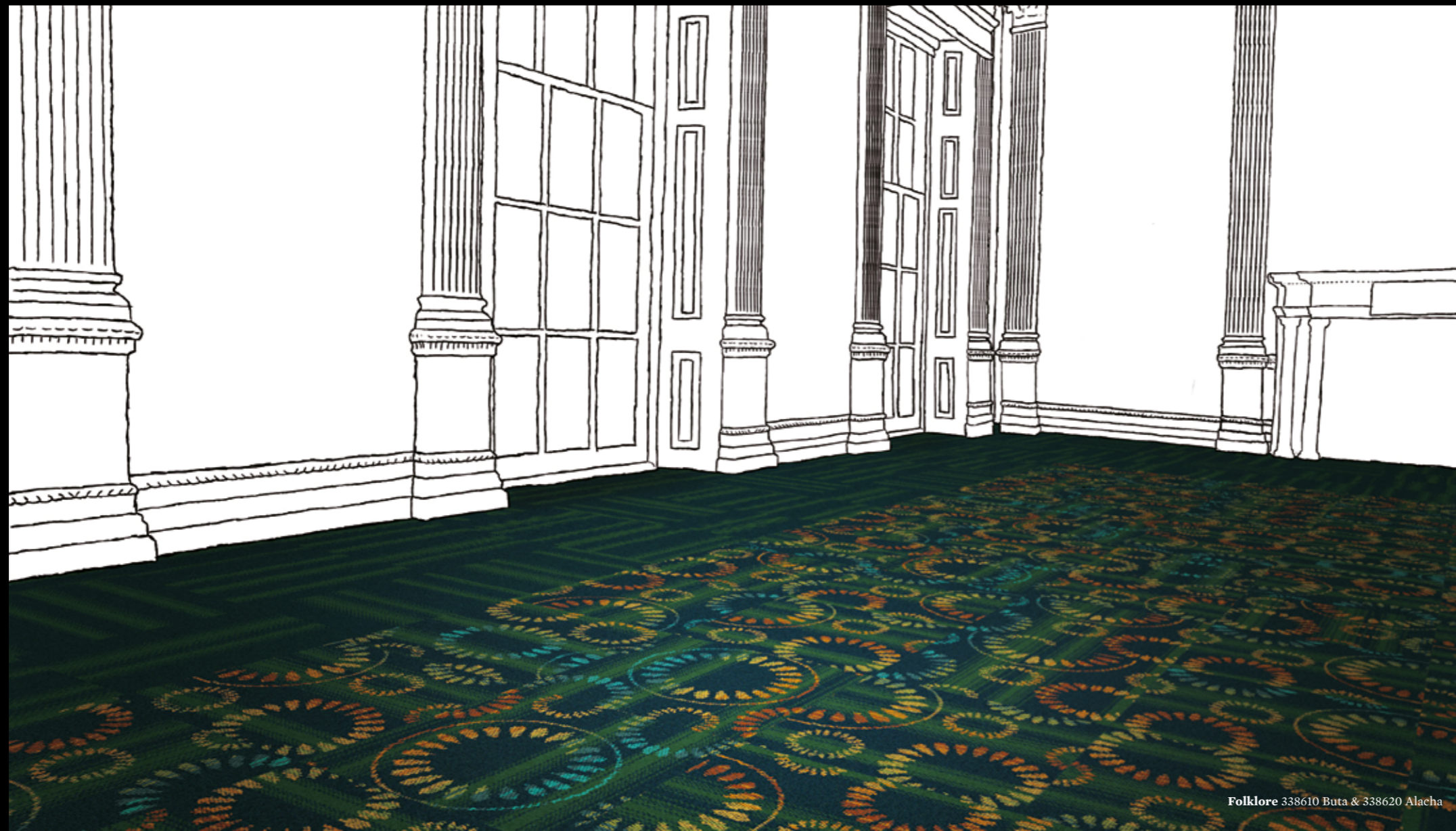
A rich tapestry from Eastern Europe

The tales of Russia and Eastern Europe have always been a strong influence on their rich and vibrant handicrafts. Now, our Folklore range draws on this tradition – with bold patterns and subtle stripes.











Folklore 338612 Buta & 338622 Alacha



338610 Buta



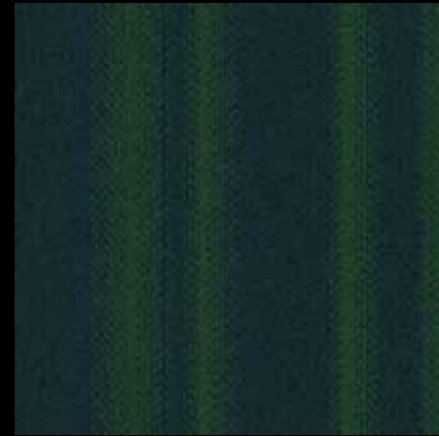
338611 Buta



338612 Buta



338613 Buta



338620 Alacha



338621 Alacha



338622 Alacha

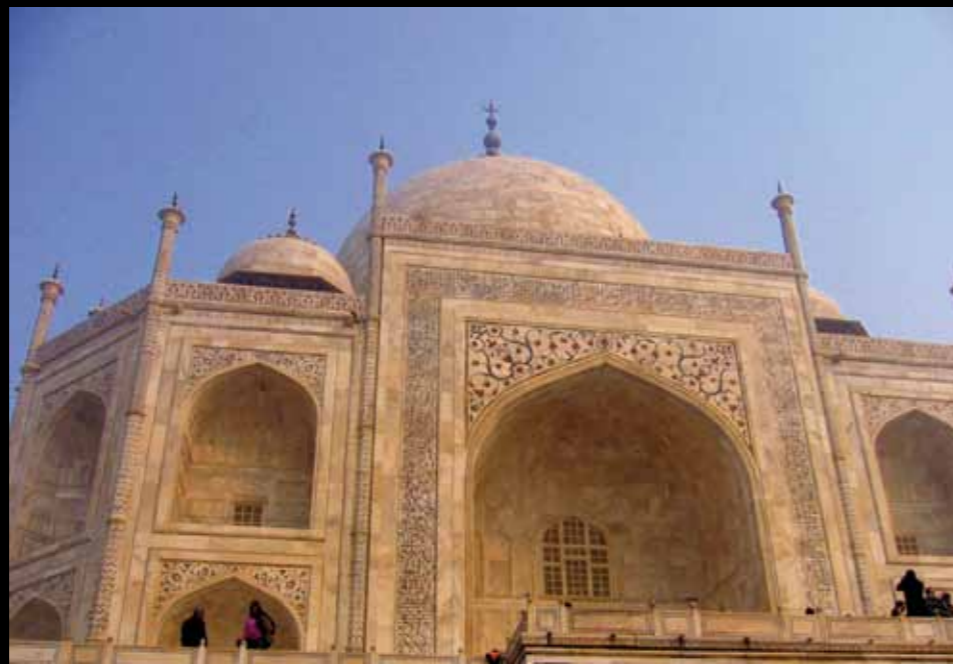


338623 Alacha

Eastern Delights

Inspired by the opulence of the East

Inspired by Henna body art and Islamic architecture, paisley designs and natural pigments – Eastern Delights combines geometric shapes and shimmering hues, with dramatic effect.



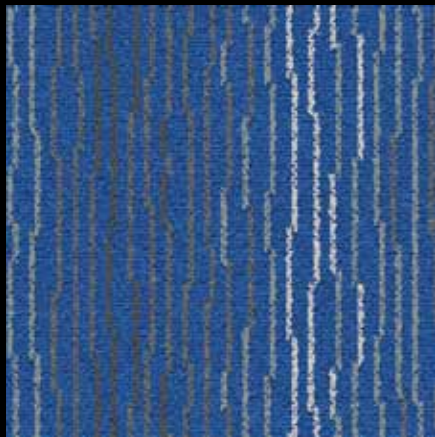


Eastern Delights 338632 Paisley, 338642 Dhurrie & 338652 Lattice





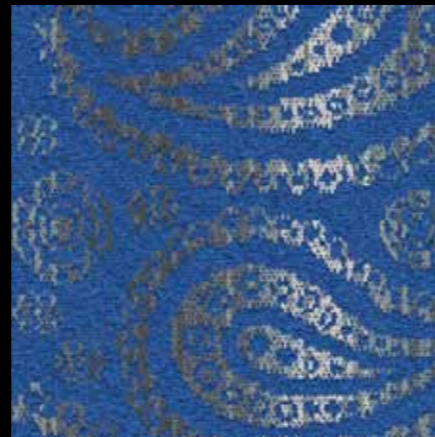
Eastern Delights 338650 Lattice



338640 Dhurrie



338641 Dhurrie



338630 Paisley



338631 Paisley



338650 Lattice



338651 Lattice



338642 Dhurrie



338643 Dhurrie



338632 Paisley



338633 Paisley



338652 Lattice

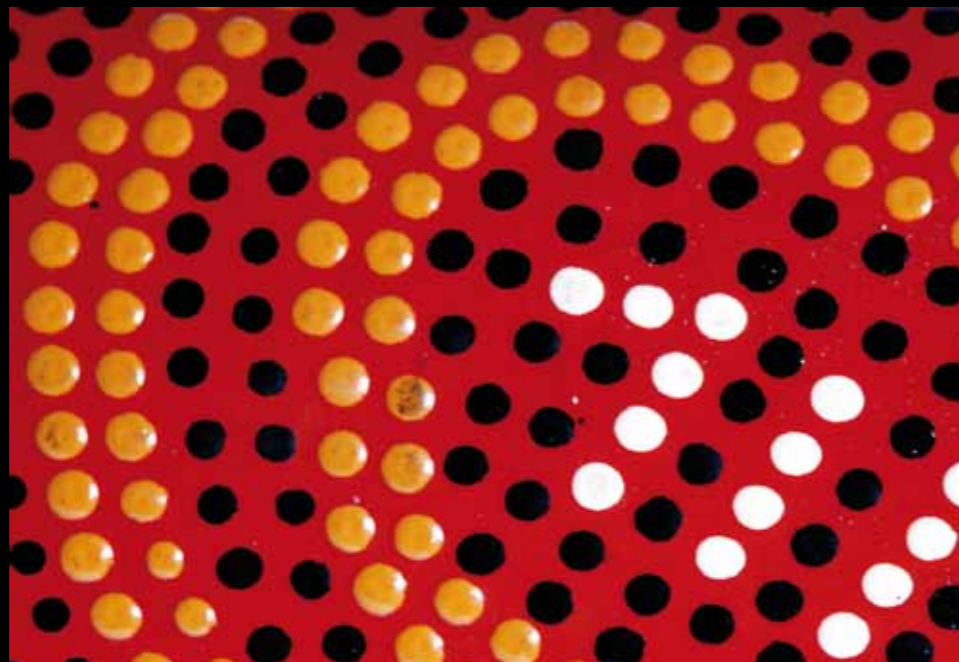


338653 Lattice

Tribal Rhythms

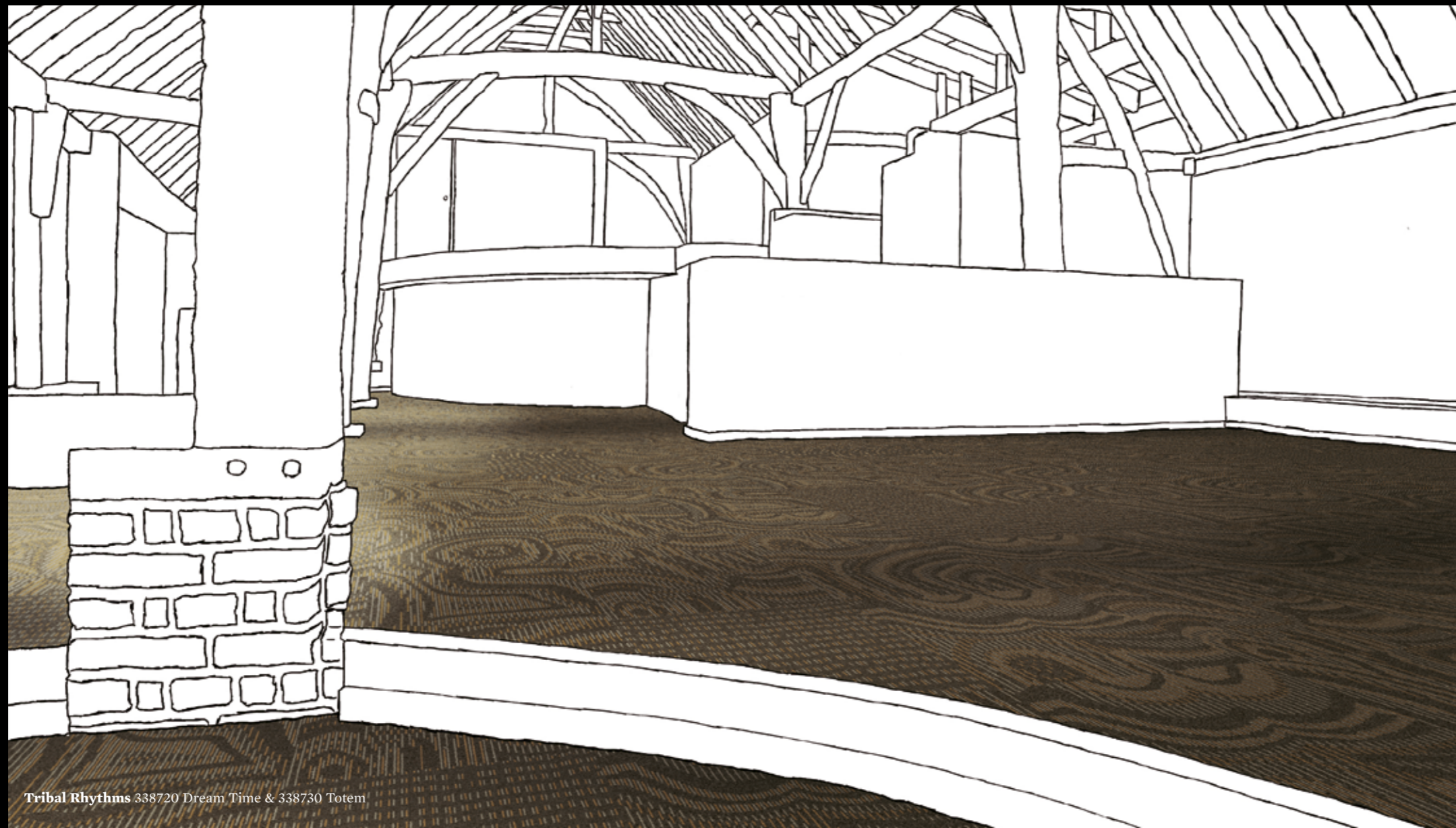
The spirit of Tribal Rhythms

Inspired by rhythmic flow and subtle dynamism, Tribal Rhythms echoes the distinctive dots and swirls of ancient and traditional Aboriginal art, with a contemporary feel.









Tribal Rhythms 338720 Dream Time & 338730 Totem



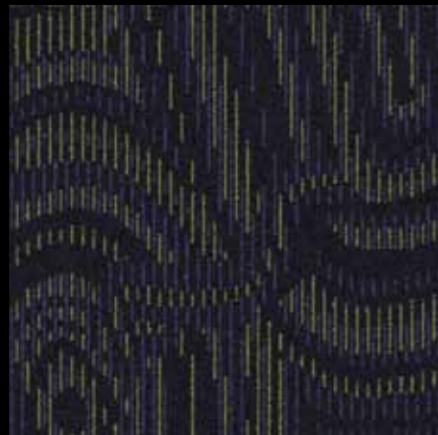
Tribal Rhythms 338723 Dream Time & 338733 Totem Black



338720 Dream Time



338721 Dream Time



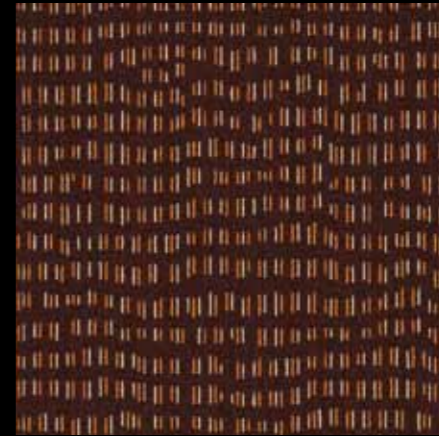
338722 Dream Time



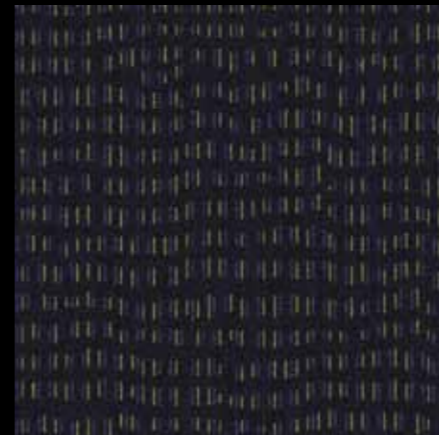
338723 Dream Time



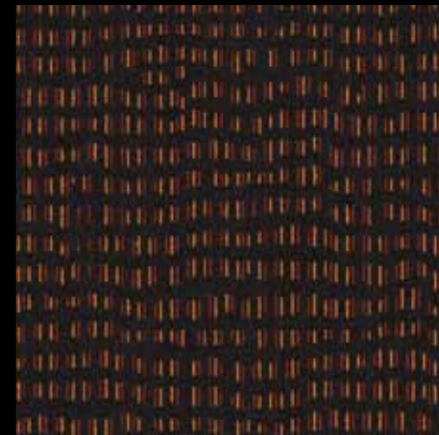
338730 Totem



338731 Totem



338732 Totem



338733 Totem

Range Name	Product Definition Konstruktion Descripción Description Type Descrizione	Pile Material Polfasermaterial Composición Fibra Composition Poolmateriaal Fibra	Pile Yarn Weight Polinsatzgewicht Peso Fibra Poids de fibre Poolinzetgewicht Peso Felpa	Total Weight Gesamtgewicht Peso Total Poids total Totaalgewicht Peso Totale	Pile Height Polsehichtdicke Espesor Total Poids total Hauteur de la fibre Poolhoogte Altezza Felpa	Total Thickness Gesamtdicke Espesor Total Epaisseur totale Totale dikte Altezza Totale	Gauge/Ends 10 cm Teilung x 10 cm Galga x 10 cm Jauge-Rangs par 10 cm Rijen per 10 cm Serraggio x 10 cm	Tufts per m ² Noppenzahl/m ² Puntadas m ² Densité du tuft par m ² Aantal noppen per m ² Densità Punti	Backing Type Rückenkonstruktion Soporte Sous-couche Ruguitvoering Sottofondo	Style Number	Wear Classification Beanspruchungsklasse Clasificación al tráfico Classement Gebruiksintensiteit Resistenza all'usura	Radiant Panel Schwerentflammbarkeit	Hot Metal Nut	Castor Chair Rating	Dimensional Stability Dimensionsstabilität Estabilidad Dimensional Stabilité dimensionnelle Dimensionele stabiliteit Test Stabilità dimensionale	Vertical Electrical Resistance	Colour Fastness Light	Tiles per Box	Sound Absorption <small>Insulation in dB = 26.0 *Insulation in dB = 23.0</small>						Logos
																			125Hz	250Hz	500Hz	1000Hz	2000Hz	4000Hz	
On Safari Yoruba	Tufted Patterned Level Loop Tile Tuftgemusterte Schlingenqualität Moqueta modular tufting bucle con diseño Dalle de moquette à velours tufté bouclé à motifs Getufte gedessineerde bouclé Bouclé tufted	100% BCF Solution Dyed Nylon contains pre-consumer recycled content 100% Solution Dyed Polyamide BCF, bevat pre-consumer gerecycled content 100% Polyamid garngefärbt mit recyceltem Anteil (Prä-Konsumenten-Anteil) 100% Poliamida BCF tintada en masa con contenido reciclado pre-consumo 100% Poyamide BCF Teint en masse contenant des éléments recyclés pré-consommation 100% Poliammide BCF tinta in massa con contenuto riciclato pre-consumer	592 g/m ² ± 5%	4497 g/m ² ± 5%	3.5 mm ± 0.3mm	7.0mm ± 0.5mm	1/10 - 39.4	193,060 ± 5%	Graphlex®	3385400405	EN 1307 33 Heavy Contract	(EN ISO 9239/1) Euroclass Cf1 S1 (EN ISO 13501)	Pass, low radius of effects of ignition (BS 4790)	≥ 2.4 (EN 985)	< 0.2% (ISO 2551)	5x10 ⁻² Ω > < 2x10 ¹⁰ Ω Computerguard (ISO 10965) (IBM)	6 (ISO 105/B02)	16 - 4m ² (50cm x 50cm ± 0.15%)	0.00*	0.02*	0.10*	0.25*	0.30*	0.41*	
On Safari Bamana	Tufted Patterned Textured Loop Tile Tuftgemusterte texturierte Schlingenqualität Moqueta modular tufting bucle estructurado con diseño Dalle de moquette à velours tufté bouclé texturé à motifs Getufte gedessineerde gestructureerde bouclé Bouclé tufted strutturato	100% BCF Solution Dyed Nylon contains pre-consumer recycled content 100% Solution Dyed Polyamide BCF, bevat pre-consumer gerecycled content 100% Polyamid garngefärbt mit recyceltem Anteil (Prä-Konsumenten-Anteil) 100% Poliamida BCF tintada en masa con contenido reciclado pre-consumo 100% Poyamide BCF Teint en masse contenant des éléments recyclés pré-consommation 100% Poliammide BCF tinta in massa con contenuto riciclato pre-consumer	684 g/m ² ± 5%	4569 g/m ² ± 5%	5.0 mm ± 0.3mm	9.1mm ± 0.5mm	1/12 - 47.2	155,760 ± 5%	Graphlex®	3385100405	EN 1307 33 Heavy Contract	(EN ISO 9239/1) Euroclass Cf1 S1 (EN ISO 13501)	Pass, low radius of effects of ignition (BS 4790)	≥ 2.4 (EN 985)	< 0.2% (ISO 2551)	5x10 ⁻² Ω > < 2x10 ¹⁰ Ω Computerguard (ISO 10965) (IBM)	6 (ISO 105/B02)	16 - 4m ² (50cm x 50cm ± 0.15%)	0.02	0.02	0.09	0.27	0.32	0.38	
On Safari Mali	Tufted Patterned Textured Loop Tile Tuftgemusterte texturierte Schlingenqualität Moqueta modular tufting bucle estructurado con diseño Dalle de moquette à velours tufté bouclé texturé à motifs Getufte gedessineerde gestructureerde bouclé Bouclé tufted strutturato	100% BCF Solution Dyed Nylon contains pre-consumer recycled content 100% Solution Dyed Polyamide BCF, bevat pre-consumer gerecycled content 100% Polyamid garngefärbt mit recyceltem Anteil (Prä-Konsumenten-Anteil) 100% Poliamida BCF tintada en masa con contenido reciclado pre-consumo 100% Poyamide BCF Teint en masse contenant des éléments recyclés pré-consommation 100% Poliammide BCF tinta in massa con contenuto riciclato pre-consumer	570 g/m ² ± 5%	4455 g/m ² ± 5%	4.0 mm ± 0.3mm	8.1mm ± 0.5mm	1/12 - 47.2	160,480 ± 5%	Graphlex®	3385000405	EN 1307 33 Heavy Contract	(EN ISO 9239/1) Euroclass Cf1 S1 (EN ISO 13501)	Pass, low radius of effects of ignition (BS 4790)	≥ 2.4 (EN 985)	< 0.2% (ISO 2551)	5x10 ⁻² Ω > < 2x10 ¹⁰ Ω Computerguard (ISO 10965) (IBM)	6 (ISO 105/B02)	16 - 4m ² (50cm x 50cm ± 0.15%)	0.00*	0.02*	0.10*	0.25*	0.30*	0.41*	
On Safari Mud Cloth	Tufted Patterned Textured Loop Tile Tuftgemusterte texturierte Schlingenqualität Moqueta modular tufting bucle estructurado con diseño Dalle de moquette à velours tufté bouclé texturé à motifs Getufte gedessineerde gestructureerde bouclé Bouclé tufted strutturato	100% BCF Solution Dyed Nylon contains pre-consumer recycled content 100% Solution Dyed Polyamide BCF, bevat pre-consumer gerecycled content 100% Polyamid garngefärbt mit recyceltem Anteil (Prä-Konsumenten-Anteil) 100% Poliamida BCF tintada en masa con contenido reciclado pre-consumo 100% Poyamide BCF Teint en masse contenant des éléments recyclés pré-consommation 100% Poliammide BCF tinta in massa con contenuto riciclato pre-consumer	684 g/m ² ± 5%	4569 g/m ² ± 5%	5.0 mm ± 0.3mm	9.1mm ± 0.5mm	1/12 - 47.2	155,760 ± 5%	Graphlex®	3385200405	EN 1307 33 Heavy Contract	(EN ISO 9239/1) Euroclass Cf1 S1 (EN ISO 13501)	Pass, low radius of effects of ignition (BS 4790)	≥ 2.4 (EN 985)	< 0.2% (ISO 2551)	5x10 ⁻² Ω > < 2x10 ¹⁰ Ω Computerguard (ISO 10965) (IBM)	6 (ISO 105/B02)	16 - 4m ² (50cm x 50cm ± 0.15%)	0.02	0.02	0.09	0.27	0.32	0.38	
On Safari Kente	Tufted Patterned Textured Loop Tile Tuftgemusterte texturierte Schlingenqualität Moqueta modular tufting bucle estructurado con diseño Dalle de moquette à velours tufté bouclé texturé à motifs Getufte gedessineerde gestructureerde bouclé Bouclé tufted strutturato	100% BCF Solution Dyed Nylon contains pre-consumer recycled content 100% Solution Dyed Polyamide BCF, bevat pre-consumer gerecycled content 100% Polyamid garngefärbt mit recyceltem Anteil (Prä-Konsumenten-Anteil) 100% Poliamida BCF tintada en masa con contenido reciclado pre-consumo 100% Poyamide BCF Teint en masse contenant des éléments recyclés pré-consommation 100% Poliammide BCF tinta in massa con contenuto riciclato pre-consumer	648 g/m ² ± 5%	4533 g/m ² ± 5%	4.2 mm ± 0.3mm	8.2mm ± 0.5mm	1/12 - 47.2	200,600 ± 5%	Graphlex®	3385300405	EN 1307 33 Heavy Contract	(EN ISO 9239/1) Euroclass Cf1 S1 (EN ISO 13501)	Pass, low radius of effects of ignition (BS 4790)	≥ 2.4 (EN 985)	< 0.2% (ISO 2551)	5x10 ⁻² Ω > < 2x10 ¹⁰ Ω Computerguard (ISO 10965) (IBM)	6 (ISO 105/B02)	16 - 4m ² (50cm x 50cm ± 0.15%)	0.02	0.02	0.09	0.27	0.32	0.38	
On Safari Mbuti	Tufted Patterned Textured Loop Tile Tuftgemusterte texturierte Schlingenqualität Moqueta modular tufting bucle estructurado con diseño Dalle de moquette à velours tufté bouclé texturé à motifs Getufte gedessineerde gestructureerde bouclé Bouclé tufted strutturato	100% BCF Solution Dyed Nylon contains pre-consumer recycled content 100% Solution Dyed Polyamide BCF, bevat pre-consumer gerecycled content 100% Polyamid garngefärbt mit recyceltem Anteil (Prä-Konsumenten-Anteil) 100% Poliamida BCF tintada en masa con contenido reciclado pre-consumo 100% Poyamide BCF Teint en masse contenant des éléments recyclés pré-consommation 100% Poliammide BCF tinta in massa con contenuto riciclato pre-consumer	672 g/m ² ± 5%	4557 g/m ² ± 5%	5.0 mm ± 0.3mm	8.9mm ± 0.5mm	1/12 - 47.2	165,200 ± 5%	Graphlex®	3385500405	EN 1307 33 Heavy Contract	(EN ISO 9239/1) Euroclass Cf1 S1 (EN ISO 13501)	Pass, low radius of effects of ignition (BS 4790)	≥ 2.4 (EN 985)	< 0.2% (ISO 2551)	5x10 ⁻² Ω > < 2x10 ¹⁰ Ω Computerguard (ISO 10965) (IBM)	6 (ISO 105/B02)	16 - 4m ² (50cm x 50cm ± 0.15%)	0.02	0.02	0.09	0.27	0.32	0.38	

Range Name	Product Definition Konstruktion Descripción Description Type Descrizione	Pile Material Polfasermaterial Composición Fibra Composition Type Descrizione	Pile Yarn Weight Poleinsatzgewicht Peso Fibra Poids de fibre Poolinzetgewicht Peso Felpa	Total Weight Gesamtgewicht Peso Total Totaalgewicht Peso Totale	Pile Height Polschichtdicke Altura Fibra Hauteur de la fibre Poolhoogte Altezza Felpa	Total Thickness Gesamtdicke Espesor Total Epaisseur totale Totale dikte Altezza Totale	Gauge/Ends 10 cm Teilung x 10 cm Galga x 10 cm Jauge-Rangs par 10 cm Rijen per 10 cm Serraggio x 10 cm	Tufts per m ² Noppenzahl/m ² Puntadas m ² Densité du tuft par m ² Aantal noppen per m ² Densità Punti	Backing Type Rückenkonstruktion Soporte Sous-couche Ruguitvoering Sottofondo	Style Number	Wear Classification Beanspruchungsklasse Clasificación al tráfico Classement Gebruiksintensiteit Resistenza all'usura	Radiant Panel Schwerent- flammparkeit	Hot Metal Nut	Castor Chair Rating	Dimensional Stability Dimensionsstabilität Estabilidad Dimensional Stabilité dimensionnelle Dimensionele stabiliteit Test Stabilità dimensionale	Vertical Electrical Resistance	Colour Fastness Light	Tiles per Box	Sound Absorption Insulation in dB = 23.0 *Insulation in dB = 26.0						Logos
																			125Hz	250Hz	500Hz	1000Hz	2000Hz	4000Hz	
On Safari Barkcloth	Tufted Patterned Textured Loop Tile Tuftgemusterte texturierte Schlingenqualität Moqueta modular tufting bucle estructurado con diseño Dalle de moquette à velours tufté bouclé texturé à motifs Getufte gedessineerde gestructureerde bouclé Bouclé tufted strutturato	100% BCF Solution Dyed Nylon contains pre-consumer recycled content 100% Solution Dyed Polyamide BCF, bevat pre-consumer gerecycled content 100% Polyamid garngefärbt mit recyceltem Anteil (Prä-Konsumenten-Anteil) 100% Poliamida BCF tintada en masa con contenido reciclado pre-consumo 100% Poyamide BCF Teint en masse contenant des éléments recyclés pré-consommation 100% Poliammide BCF tinta in massa con contenuto riciclato pre-consumer	672 g/m ² ± 5%	4557 g/m ² ± 5%	5.0 mm ± 0.3mm	8.9mm ± 0.5mm	1/12 - 47.2	165,200 ± 5%	Graphlex®	3385600405	EN 1307 33 Heavy Contract	(EN ISO 9239/1) Euroclass Cfl S1 (EN ISO 13501)	Pass, low radius of effects of ignition (BS 4790)	≥ 2.4 (EN 985)	< 0.2% (ISO 2551)	5x10 ⁵ Ω >> < 2x10 ¹⁰ Ω Computerguard (ISO 10965) (IBM)	6 (ISO 105/B02)	16 - 4m ² (50cm x 50cm ± 0.15%)	0.02	0.02	0.09	0.27	0.32	0.38	
Latin Fever Quechua	Tufted Patterned Level Loop Tile Tuftgemusterte Schlingenqualität Moqueta modular tufting bucle con diseño Dalle de moquette à velours tufté bouclé à motifs Getufte gedessineerde bouclé Bouclé tufted	100% BCF Solution Dyed Nylon contains pre-consumer recycled content 100% Solution Dyed Polyamide BCF, bevat pre-consumer gerecycled content 100% Polyamid garngefärbt mit recyceltem Anteil (Prä-Konsumenten-Anteil) 100% Poliamida BCF tintada en masa con contenido reciclado pre-consumo 100% Poyamide BCF Teint en masse contenant des éléments recyclés pré-consommation 100% Poliammide BCF tinta in massa con contenuto riciclato pre-consumer	592 g/m ² ± 5%	4497 g/m ² ± 5%	3.5 mm ± 0.3mm	7.0mm ± 0.5mm	1/10 - 39.4	193,060 ± 5%	Graphlex®	3385700405	EN 1307 33 Heavy Contract	(EN ISO 9239/1) Euroclass Cfl S1 (EN ISO 13501)	Pass, low radius of effects of ignition (BS 4790)	≥ 2.4 (EN 985)	< 0.2% (ISO 2551)	5x10 ⁵ Ω >> < 2x10 ¹⁰ Ω Computerguard (ISO 10965) (IBM)	6 (ISO 105/B02)	16 - 4m ² (50cm x 50cm ± 0.15%)	0.00*	0.02*	0.10*	0.25*	0.30*	0.41*	
Latin Fever Manta	Tufted Patterned Textured Loop Tile Tuftgemusterte texturierte Schlingenqualität Moqueta modular tufting bucle estructurado con diseño Dalle de moquette à velours tufté bouclé texturé à motifs Getufte gedessineerde gestructureerde bouclé Bouclé tufted strutturato	100% BCF Solution Dyed Nylon contains pre-consumer recycled content 100% Solution Dyed Polyamide BCF, bevat pre-consumer gerecycled content 100% Polyamid garngefärbt mit recyceltem Anteil (Prä-Konsumenten-Anteil) 100% Poliamida BCF tintada en masa con contenido reciclado pre-consumo 100% Poyamide BCF Teint en masse contenant des éléments recyclés pré-consommation 100% Poliammide BCF tinta in massa con contenuto riciclato pre-consumer	570 g/m ² ± 5%	4455 g/m ² ± 5%	4.0 mm ± 0.3mm	8.1mm ± 0.5mm	1/12 - 47.2	160,480 ± 5%	Graphlex®	3385800405	EN 1307 33 Heavy Contract	(EN ISO 9239/1) Euroclass Cfl S1 (EN ISO 13501)	Pass, low radius of effects of ignition (BS 4790)	≥ 2.4 (EN 985)	< 0.2% (ISO 2551)	5x10 ⁵ Ω >> < 2x10 ¹⁰ Ω Computerguard (ISO 10965) (IBM)	6 (ISO 105/B02)	16 - 4m ² (50cm x 50cm ± 0.15%)	0.00*	0.02*	0.10*	0.25*	0.30*	0.41*	
Latin Fever Ayacucho	Tufted Patterned Textured Loop Tile Tuftgemusterte texturierte Schlingenqualität Moqueta modular tufting bucle estructurado con diseño Dalle de moquette à velours tufté bouclé texturé à motifs Getufte gedessineerde gestructureerde bouclé Bouclé tufted strutturato	100% BCF Solution Dyed Nylon contains pre-consumer recycled content 100% Solution Dyed Polyamide BCF, bevat pre-consumer gerecycled content 100% Polyamid garngefärbt mit recyceltem Anteil (Prä-Konsumenten-Anteil) 100% Poliamida BCF tintada en masa con contenido reciclado pre-consumo 100% Poyamide BCF Teint en masse contenant des éléments recyclés pré-consommation 100% Poliammide BCF tinta in massa con contenuto riciclato pre-consumer	645 g/m ² ± 5%	4550 g/m ² ± 5%	4.7 mm ± 0.3mm	8.3mm ± 0.5mm	1/10 - 39.4	200,940 ± 5%	Graphlex®	3386000405	EN 1307 33 Heavy Contract	(EN ISO 9239/1) Euroclass Cfl S1 (EN ISO 13501)	Pass, low radius of effects of ignition (BS 4790)	≥ 2.4 (EN 985)	< 0.2% (ISO 2551)	5x10 ⁵ Ω >> < 2x10 ¹⁰ Ω Computerguard (ISO 10965) (IBM)	6 (ISO 105/B02)	16 - 4m ² (50cm x 50cm ± 0.15%)	0.02	0.02	0.09	0.27	0.32	0.38	
Latin Fever Chuspa	Tufted Patterned Textured Loop Tile Tuftgemusterte texturierte Schlingenqualität Moqueta modular tufting bucle estructurado con diseño Dalle de moquette à velours tufté bouclé texturé à motifs Getufte gedessineerde gestructureerde bouclé Bouclé tufted strutturato	100% BCF Solution Dyed Nylon contains pre-consumer recycled content 100% Solution Dyed Polyamide BCF, bevat pre-consumer gerecycled content 100% Polyamid garngefärbt mit recyceltem Anteil (Prä-Konsumenten-Anteil) 100% Poliamida BCF tintada en masa con contenido reciclado pre-consumo 100% Poyamide BCF Teint en masse contenant des éléments recyclés pré-consommation 100% Poliammide BCF tinta in massa con contenuto riciclato pre-consumer	640 g/m ² ± 5%	4545 g/m ² ± 5%	4.7 mm ± 0.3mm	8.3mm ± 0.5mm	1/10 - 39.4	220,640 ± 5%	Graphlex®	3385900405	EN 1307 33 Heavy Contract	(EN ISO 9239/1) Euroclass Cfl S1 (EN ISO 13501)	Pass, low radius of effects of ignition (BS 4790)	≥ 2.4 (EN 985)	< 0.2% (ISO 2551)	5x10 ⁵ Ω >> < 2x10 ¹⁰ Ω Computerguard (ISO 10965) (IBM)	6 (ISO 105/B02)	16 - 4m ² (50cm x 50cm ± 0.15%)	0.02	0.02	0.09	0.27	0.32	0.38	
Folklore Buta	Tufted Patterned Textured Loop Tile Tuftgemusterte texturierte Schlingenqualität Moqueta modular tufting bucle estructurado con diseño Dalle de moquette à velours tufté bouclé texturé à motifs Getufte gedessineerde gestructureerde bouclé Bouclé tufted strutturato	100% BCF Solution Dyed Nylon contains pre-consumer recycled content 100% Solution Dyed Polyamide BCF, bevat pre-consumer gerecycled content 100% Polyamid garngefärbt mit recyceltem Anteil (Prä-Konsumenten-Anteil) 100% Poliamida BCF tintada en masa con contenido reciclado pre-consumo 100% Poyamide BCF Teint en masse contenant des éléments recyclés pré-consommation 100% Poliammide BCF tinta in massa con contenuto riciclato pre-consumer	680 g/m ² ± 5%	4585 g/m ² ± 5%	4.6 mm ± 0.3mm	8.4mm ± 0.5mm	1/12 - 47.2	179,360 ± 5%	Graphlex®	3386100405	EN 1307 33 Heavy Contract	(EN ISO 9239/1) Euroclass Cfl S1 (EN ISO 13501)	Pass, low radius of effects of ignition (BS 4790)	≥ 2.4 (EN 985)	< 0.2% (ISO 2551)	5x10 ⁵ Ω >> < 2x10 ¹⁰ Ω Computerguard (ISO 10965) (IBM)	6 (ISO 105/B02)	16 - 4m ² (50cm x 50cm ± 0.15%)	0.02	0.02	0.09	0.27	0.32	0.38	

Range Name	Product Definition Konstruktion Descripción Description Type Descrizione	Pile Material Polfasermaterial Composición Fibra Composition Type Poolmateriaal Fibra	Pile Yarn Weight Poleinsatzgewicht Peso Fibra Poids de fibre Poolinzetgewicht Peso Felpa	Total Weight Gesamtgewicht Peso Total Poids total Totaalgewicht Peso Totale	Pile Height Polschichtdicke Altura Fibra Hauteur de la fibre Poolhoogte Altezza Felpa	Total Thickness Gesamtdicke Espesor Total Épaisseur totale Totale dikte Altezza Totale	Gauge/Ends 10 cm Teilung x 10 cm Galga x 10 cm Jauge-Rangs par 10 cm Rijen per 10 cm Serraggio x 10 cm	Tufts per m ² Noppenzahl/m ² Puntadas m ² Densité du tuft par m ² Aantal noppen per m ² Densità Punti	Backing Type Rückenkonstruktion Soporte Sous-couche Ruguitvoering Sottofondo	Style Number	Wear Classification Beanspruchungsklasse Clasificación al tráfico Classement Gebruiksintensiteit Resistenza all'usura	Radiant Panel Schwerentflammbarkeit	Hot Metal Nut	Castor Chair Rating	Dimensional Stability Dimensionsstabilität Estabilidad Dimensional Stabilité dimensionnelle Dimensionale stabiliteit Test Stabilità dimensionale	Vertical Electrical Resistance	Colour Fastness Light	Tiles per Box	Sound Absorption <small>Insulation in dB = 23.0</small> <small>*Insulation in dB = 26.0</small>						Logos
																			125Hz	250Hz	500Hz	1000Hz	2000Hz	4000Hz	
Folklore Alacha	Tufted Patterned Level Loop Tile Tuftgemusterte Schlingenqualität Moqueta modular tufting bucle con diseño Dalle de moquette à velours tufté bouclé à motifs Getufte gedessineerde bouclé Bouclé tufted	100% BCF Solution Dyed Nylon contains pre-consumer recycled content 100% Solution Dyed Polyamide BCF, bevat pre-consumer gerecycled content 100% Polyamid gamgefärbt mit recyceltem Anteil (Prä-Konsumenten-Anteil) 100% Poliamida BCF tintada en masa con contenido reciclado pre-consumo 100% Poyamide BCF Teint en masse contenant des éléments recyclés pré-consommation 100% Poliammide BCF tinta in massa con contenuto riciclato pre-consumer	572 g/m ² ± 5%	4447 g/m ² ± 5%	3.5 mm ± 0.3mm	7.0mm ± 0.5mm	1/10 - 39.4	173,360 ± 5%	Graphlex®	3386200405	EN 1307 33 Heavy Contract	(EN ISO 9239/1) Euroclass Cf1 S1 (EN ISO 13501)	Pass, low radius of effects of ignition (BS 4790)	≥ 2.4 (EN 985)	< 0.2% (ISO 2551)	5x10 ⁵ Ω > < 2x10 ¹⁰ Ω Computerguard (ISO 10965) (IBM)	6 (ISO 105/B02)	16 - 4m ² (50cm x 50cm ± 0.15%)	0.00*	0.02*	0.10*	0.25*	0.30*	0.41*	
Eastern Delights Dhurie	Tufted Patterned Textured Loop Tile Tuftgemusterte texturierte Schlingenqualität Moqueta modular tufting bucle estructurado con diseño Dalle de moquette à velours tufté bouclé texturé à motifs Getufte gedessineerde gestructureerde bouclé Bouclé tufted strutturato	100% BCF Solution Dyed Nylon contains pre-consumer recycled content 100% Solution Dyed Polyamide BCF, bevat pre-consumer gerecycled content 100% Polyamid gamgefärbt mit recyceltem Anteil (Prä-Konsumenten-Anteil) 100% Poliamida BCF tintada en masa con contenido reciclado pre-consumo 100% Poyamide BCF Teint en masse contenant des éléments recyclés pré-consommation 100% Poliammide BCF tinta in massa con contenuto riciclato pre-consumer	636 g/m ² ± 5%	4521 g/m ² ± 5%	4.3 mm ± 0.3mm	8.3mm ± 0.5mm	1/12 - 47.2	160,480 ± 5%	Graphlex®	3386400405	EN 1307 33 Heavy Contract	(EN ISO 9239/1) Euroclass Cf1 S1 (EN ISO 13501)	Pass, low radius of effects of ignition (BS 4790)	≥ 2.4 (EN 985)	< 0.2% (ISO 2551)	5x10 ⁵ Ω > < 2x10 ¹⁰ Ω Computerguard (ISO 10965) (IBM)	6 (ISO 105/B02)	16 - 4m ² (50cm x 50cm ± 0.15%)	0.02	0.02	0.09	0.27	0.32	0.38	
Eastern Delights Paisley	Tufted Patterned Textured Loop Tile Tuftgemusterte texturierte Schlingenqualität Moqueta modular tufting bucle estructurado con diseño Dalle de moquette à velours tufté bouclé texturé à motifs Getufte gedessineerde gestructureerde bouclé Bouclé tufted strutturato	100% BCF Solution Dyed Nylon contains pre-consumer recycled content 100% Solution Dyed Polyamide BCF, bevat pre-consumer gerecycled content 100% Polyamid gamgefärbt mit recyceltem Anteil (Prä-Konsumenten-Anteil) 100% Poliamida BCF tintada en masa con contenido reciclado pre-consumo 100% Poyamide BCF Teint en masse contenant des éléments recyclés pré-consommation 100% Poliammide BCF tinta in massa con contenuto riciclato pre-consumer	692 g/m ² ± 5%	4577 g/m ² ± 5%	4.5 mm ± 0.3mm	8.5mm ± 0.5mm	1/12 - 47.2	181,720 ± 5%	Graphlex®	3386300405	EN 1307 33 Heavy Contract	(EN ISO 9239/1) Euroclass Cf1 S1 (EN ISO 13501)	Pass, low radius of effects of ignition (BS 4790)	≥ 2.4 (EN 985)	< 0.2% (ISO 2551)	5x10 ⁵ Ω > < 2x10 ¹⁰ Ω Computerguard (ISO 10965) (IBM)	6 (ISO 105/B02)	16 - 4m ² (50cm x 50cm ± 0.15%)	0.02	0.02	0.09	0.27	0.32	0.38	
Eastern Delights Lattice	Tufted Patterned Textured Loop Tile Tuftgemusterte texturierte Schlingenqualität Moqueta modular tufting bucle estructurado con diseño Dalle de moquette à velours tufté bouclé texturé à motifs Getufte gedessineerde gestructureerde bouclé Bouclé tufted strutturato	100% BCF Solution Dyed Nylon contains pre-consumer recycled content 100% Solution Dyed Polyamide BCF, bevat pre-consumer gerecycled content 100% Polyamid gamgefärbt mit recyceltem Anteil (Prä-Konsumenten-Anteil) 100% Poliamida BCF tintada en masa con contenido reciclado pre-consumo 100% Poyamide BCF Teint en masse contenant des éléments recyclés pré-consommation 100% Poliammide BCF tinta in massa con contenuto riciclato pre-consumer	680 g/m ² ± 5%	4565 g/m ² ± 5%	4.6 mm ± 0.3mm	8.6mm ± 0.5mm	1/12 - 47.2	160,480 ± 5%	Graphlex®	3386500405	EN 1307 33 Heavy Contract	(EN ISO 9239/1) Euroclass Cf1 S1 (EN ISO 13501)	Pass, low radius of effects of ignition (BS 4790)	≥ 2.4 (EN 985)	< 0.2% (ISO 2551)	5x10 ⁵ Ω > < 2x10 ¹⁰ Ω Computerguard (ISO 10965) (IBM)	6 (ISO 105/B02)	16 - 4m ² (50cm x 50cm ± 0.15%)	0.02	0.02	0.09	0.27	0.32	0.38	
The Orient Dynamic	Tufted Cut and Loop Tile Getufte Schlingen-Velours-Qualität Moqueta modular tufting pelo cortado y bucle Dalle de moquette à velours tufté bouclé et coupé Tegeltapijt met een combinatie van gesneden- en lussenpool Velluto e bouclé tufted strutturato	100% BCF Solution Dyed Nylon contains pre-consumer recycled content 100% Solution Dyed Polyamide BCF, bevat pre-consumer gerecycled content 100% Polyamid gamgefärbt mit recyceltem Anteil (Prä-Konsumenten-Anteil) 100% Poliamida BCF tintada en masa con contenido reciclado pre-consumo 100% Poyamide BCF Teint en masse contenant des éléments recyclés pré-consommation 100% Poliammide BCF tinta in massa con contenuto riciclato pre-consumer	768 g/m ² ± 5%	4673 g/m ² ± 5%	5.1 mm ± 0.3mm	9.2mm ± 0.5mm	5/64 - 50.4	173,880 ± 5%	Graphlex®	3387100405	EN 1307 33 Heavy Contract	(EN ISO 9239/1) Euroclass Cf1 S1 (EN ISO 13501)	Pass, low radius of effects of ignition (BS 4790)	≥ 2.4 (EN 985)	< 0.2% (ISO 2551)	5x10 ⁵ Ω > < 2x10 ¹⁰ Ω Computerguard (ISO 10965) (IBM)	6 (ISO 105/B02)	16 - 4m ² (50cm x 50cm ± 0.15%)	0.02	0.02	0.09	0.27	0.32	0.38	
The Orient Celestial	Tufted Cut and Loop Tile Getufte Schlingen-Velours-Qualität Moqueta modular tufting pelo cortado y bucle Dalle de moquette à velours tufté bouclé et coupé Tegeltapijt met een combinatie van gesneden- en lussenpool Velluto e bouclé tufted strutturato	100% BCF Solution Dyed Nylon contains pre-consumer recycled content 100% Solution Dyed Polyamide BCF, bevat pre-consumer gerecycled content 100% Polyamid gamgefärbt mit recyceltem Anteil (Prä-Konsumenten-Anteil) 100% Poliamida BCF tintada en masa con contenido reciclado pre-consumo 100% Poyamide BCF Teint en masse contenant des éléments recyclés pré-consommation 100% Poliammide BCF tinta in massa con contenuto riciclato pre-consumer	764 g/m ² ± 5%	4669 g/m ² ± 5%	4.7 mm ± 0.3mm	9.2mm ± 0.5mm	5/64 - 50.4	173,880 ± 5%	Graphlex®	3386800405	EN 1307 33 Heavy Contract	(EN ISO 9239/1) Euroclass Cf1 S1 (EN ISO 13501)	Pass, low radius of effects of ignition (BS 4790)	≥ 2.4 (EN 985)	< 0.2% (ISO 2551)	5x10 ⁵ Ω > < 2x10 ¹⁰ Ω Computerguard (ISO 10965) (IBM)	6 (ISO 105/B02)	16 - 4m ² (50cm x 50cm ± 0.15%)	0.02	0.02	0.09	0.27	0.32	0.38	

Range Name	Product Definition Konstruktion Descripción Description Type Descrizione	Pile Material Polfasermaterial Composición Fibra Composition Poolmateriaal Fibra	Pile Yarn Weight Polinsatzgewicht Peso Fibra Poids de fibre Poolinzetgewicht Peso Felpa	Total Weight Gesamtgewicht Peso Total Poids total Totaalgewicht Peso Totale	Pile Height Polschichtdicke Altura Fibra Hauteur de la fibre Poolhoogte Altezza Felpa	Total Thickness Gesamtdicke Espesor Total Épaisseur totale Totale dikte Altezza Totale	Gauge/Ends 10 cm Teilung x 10 cm Galga x 10 cm Jauge-Rangs par 10 cm Rijen per 10 cm Serraggio x 10 cm	Tufts per m ² Noppenzahl/m ² Puntadas m ² Densité du tuft par m ² Aantal noppen per m ² Densità Punti	Backing Type Rückenkonstruktion Soporte Sous-couche Ruguitvoering Sottofondo	Style Number	Wear Classification Beanspruchungsklasse Clasificación al tráfico Classement Gebruiksintensiteit Resistenza all'usura	Radiant Panel Schwerent- flammbarkeit	Hot Metal Nut	Castor Chair Rating	Dimensional Stability Dimensionsstabilität Estabilidad Dimensional Stabilité dimensionnelle Dimensionele stabiliteit Test Stabilità dimensionale	Vertical Electrical Resistance	Colour Fastness Light	Tiles per Box	Sound Absorption Insulation in dB = 23.0 *Insulation in dB = 26.0						Logos
																			125Hz	250Hz	500Hz	1000Hz	2000Hz	4000Hz	
The Orient Bonsai	Tufted Patterned Textured Loop Tile Tuftgemusterte texturierte Schlingenqualität Moqueta modular tufting bucle estructurado con diseño Dalle de moquette à velours tufté bouclé texturé à motifs Getufte gedessineerde gestructureerde bouclé Bouclé tufted strutturato	100% BCF Solution Dyed Nylon contains pre-consumer recycled content 100% Solution Dyed Polyamide BCF, bevat pre-consumer gerecycled content 100% Polyamid garngefärbt mit recyceltem Anteil (Prä-Konsumenten-Anteil) 100% Poliamida BCF tintada en masa con contenido reciclado pre-consumo 100% Poyamide BCF Teint en masse contenant des éléments recyclés pré-conso mmation 100% Poliammide BCF tinta in massa con contenuto riciclato pre-consumer	660 g/m ² ± 5%	4545 g/m ² ± 5%	4.1 mm ± 0.3mm	8.1mm ± 0.5mm	1/12 - 47.2	165,200 ± 5%	Graphlex®	3386700405	EN 1307 33 Heavy Contract	(EN ISO 9239/1) Euroclass Cf1 S1 (EN ISO 13501)	Pass, low radius of effects of ignition (BS 4790)	≥ 2.4 (EN 985)	< 0.2% (ISO 2551)	5x10 ⁻⁵ Ω >> < 2x10 ¹⁰ Ω Computerguard (ISO 10965) (IBM)	6 (ISO 105/ B02)	16 - 4m ² (50cm x 50cm ± 0.15%)	0.02	0.02	0.09	0.27	0.32	0.38	
The Orient Kabuki	Tufted Cut and Loop Tile Getufte Schlingen-Velours-Qualität Moqueta modular tufting pelo cortado y bucle Dalle de moquette à velours tufté bouclé et coupé Tegeltapijt met een combinatie van gesneden- en lussenpool Velluto e bouclé tufted strutturato	100% BCF Solution Dyed Nylon contains pre-consumer recycled content 100% Solution Dyed Polyamide BCF, bevat pre-consumer gerecycled content 100% Polyamid garngefärbt mit recyceltem Anteil (Prä-Konsumenten-Anteil) 100% Poliamida BCF tintada en masa con contenido reciclado pre-consumo 100% Poyamide BCF Teint en masse contenant des éléments recyclés pré-conso mmation 100% Poliammide BCF tinta in massa con contenuto riciclato pre-consumer	748 g/m ² ± 5%	4653 g/m ² ± 5%	4.7 mm ± 0.3mm	9.2mm ± 0.5mm	5/64 - 50.4	173,880 ± 5%	Graphlex®	3386900405	EN 1307 33 Heavy Contract	(EN ISO 9239/1) Euroclass Cf1 S1 (EN ISO 13501)	Pass, low radius of effects of ignition (BS 4790)	≥ 2.4 (EN 985)	< 0.2% (ISO 2551)	5x10 ⁻⁵ Ω >> < 2x10 ¹⁰ Ω Computerguard (ISO 10965) (IBM)	6 (ISO 105/ B02)	16 - 4m ² (50cm x 50cm ± 0.15%)	0.02	0.02	0.09	0.27	0.32	0.38	
The Orient Chi	Tufted Cut and Loop Tile Getufte Schlingen-Velours-Qualität Moqueta modular tufting pelo cortado y bucle Dalle de moquette à velours tufté bouclé et coupé Tegeltapijt met een combinatie van gesneden- en lussenpool Velluto e bouclé tufted strutturato	100% BCF Solution Dyed Nylon contains pre-consumer recycled content 100% Solution Dyed Polyamide BCF, bevat pre-consumer gerecycled content 100% Polyamid garngefärbt mit recyceltem Anteil (Prä-Konsumenten-Anteil) 100% Poliamida BCF tintada en masa con contenido reciclado pre-consumo 100% Poyamide BCF Teint en masse contenant des éléments recyclés pré-conso mmation 100% Poliammide BCF tinta in massa con contenuto riciclato pre-consumer	768 g/m ² ± 5%	4673 g/m ² ± 5%	4.7 mm ± 0.3mm	9.2mm ± 0.5mm	5/64 - 50.4	173,880 ± 5%	Graphlex®	3387000405	EN 1307 33 Heavy Contract	(EN ISO 9239/1) Euroclass Cf1 S1 (EN ISO 13501)	Pass, low radius of effects of ignition (BS 4790)	≥ 2.4 (EN 985)	< 0.2% (ISO 2551)	5x10 ⁻⁵ Ω >> < 2x10 ¹⁰ Ω Computerguard (ISO 10965) (IBM)	6 (ISO 105/ B02)	16 - 4m ² (50cm x 50cm ± 0.15%)	0.02	0.02	0.09	0.27	0.32	0.38	
The Orient Kimone	Tufted Patterned Textured Loop Tile Tuftgemusterte texturierte Schlingenqualität Moqueta modular tufting bucle estructurado con diseño Dalle de moquette à velours tufté bouclé texturé à motifs Getufte gedessineerde gestructureerde bouclé Bouclé tufted strutturato	100% BCF Solution Dyed Nylon contains pre-consumer recycled content 100% Solution Dyed Polyamide BCF, bevat pre-consumer gerecycled content 100% Polyamid garngefärbt mit recyceltem Anteil (Prä-Konsumenten-Anteil) 100% Poliamida BCF tintada en masa con contenido reciclado pre-consumo 100% Poyamide BCF Teint en masse contenant des éléments recyclés pré-conso mmation 100% Poliammide BCF tinta in massa con contenuto riciclato pre-consumer	666 g/m ² ± 5%	4551 g/m ² ± 5%	4.1 mm ± 0.3mm	8.1mm ± 0.5mm	1/12 - 47.2	165,200 ± 5%	Graphlex®	3386600405	EN 1307 33 Heavy Contract	(EN ISO 9239/1) Euroclass Cf1 S1 (EN ISO 13501)	Pass, low radius of effects of ignition (BS 4790)	≥ 2.4 (EN 985)	< 0.2% (ISO 2551)	5x10 ⁻⁵ Ω >> < 2x10 ¹⁰ Ω Computerguard (ISO 10965) (IBM)	6 (ISO 105/ B02)	16 - 4m ² (50cm x 50cm ± 0.15%)	0.02	0.02	0.09	0.27	0.32	0.38	
Tribal Rhythms Dream Time	Tufted Patterned Textured Loop Tile Tuftgemusterte texturierte Schlingenqualität Moqueta modular tufting bucle estructurado con diseño Dalle de moquette à velours tufté bouclé texturé à motifs Getufte gedessineerde gestructureerde bouclé Bouclé tufted strutturato	100% BCF Solution Dyed Nylon contains pre-consumer recycled content 100% Solution Dyed Polyamide BCF, bevat pre-consumer gerecycled content 100% Polyamid garngefärbt mit recyceltem Anteil (Prä-Konsumenten-Anteil) 100% Poliamida BCF tintada en masa con contenido reciclado pre-consumo 100% Poyamide BCF Teint en masse contenant des éléments recyclés pré-conso mmation 100% Poliammide BCF tinta in massa con contenuto riciclato pre-consumer	604 g/m ² ± 5%	4489 g/m ² ± 5%	4.5 mm ± 0.3mm	8.5mm ± 0.5mm	1/12 - 47.2	151,040 ± 5%	Graphlex®	3387200405	EN 1307 33 Heavy Contract	(EN ISO 9239/1) Euroclass Cf1 S1 (EN ISO 13501)	Pass, low radius of effects of ignition (BS 4790)	≥ 2.4 (EN 985)	< 0.2% (ISO 2551)	5x10 ⁻⁵ Ω >> < 2x10 ¹⁰ Ω Computerguard (ISO 10965) (IBM)	6 (ISO 105/ B02)	16 - 4m ² (50cm x 50cm ± 0.15%)	0.02	0.02	0.09	0.27	0.32	0.38	
Tribal Rhythms Totem	Tufted Patterned Textured Loop Tile Tuftgemusterte texturierte Schlingenqualität Moqueta modular tufting bucle estructurado con diseño Dalle de moquette à velours tufté bouclé texturé à motifs Getufte gedessineerde gestructureerde bouclé Bouclé tufted strutturato	100% BCF Solution Dyed Nylon contains pre-consumer recycled content 100% Solution Dyed Polyamide BCF, bevat pre-consumer gerecycled content 100% Polyamid garngefärbt mit recyceltem Anteil (Prä-Konsumenten-Anteil) 100% Poliamida BCF tintada en masa con contenido reciclado pre-consumo 100% Poyamide BCF Teint en masse contenant des éléments recyclés pré-conso mmation 100% Poliammide BCF tinta in massa con contenuto riciclato pre-consumer	632 g/m ² ± 5%	4517 g/m ² ± 5%	4.5 mm ± 0.3mm	8.5mm ± 0.5mm	1/12 - 47.2	151,040 ± 5%	Graphlex®	3387300405	EN 1307 33 Heavy Contract	(EN ISO 9239/1) Euroclass Cf1 S1 (EN ISO 13501)	Pass, low radius of effects of ignition (BS 4790)	≥ 2.4 (EN 985)	< 0.2% (ISO 2551)	5x10 ⁻⁵ Ω >> < 2x10 ¹⁰ Ω Computerguard (ISO 10965) (IBM)	6 (ISO 105/ B02)	16 - 4m ² (50cm x 50cm ± 0.15%)	0.02	0.02	0.09	0.27	0.32	0.38	

AE +971 4 368 778
A +41 44.913.68.00
BA +387 33 522 534
BE +32 2 475 27 27
BG +359 2 808 303
BY +375 17 226 75 14
CH +41 44/9136800
CS +381 11 212 95 79
CZ +42 0 233 087 111
DE +49 2151 3718 0
DK +45 33 79 70 55
ES +34 914 474 499
FR +33 1 58 10 20 20
HR +385 1 2315 027
HU +36 13 84 90 05
IE +353 1 679 8466
IN +91 80 30589350
IT +39 02 890 93678
KZ +7 727 250 84 30
NL +31 33 277 5555
MK +38 9 23 224 210
NO +47 23 12 01 70
PL +48 (0) 22 862 44 69
PT +35 217 122 740
RO +40 21 317 12 40
/42/43/44
RS +381 11 212 9579
RU +7 495 234 57 27
SA +966 1 4198000
SE 020 801 801/
+45 3525 6265
SK +421 244 454 323
SI +386 1 520 0500
UA +38(044)238 27 67
UK +44 (0)1274 698503
ZA +27 11 6083324

www.interfaceflor.eu

This brochure is printed on a 75% recycled paper and manufactured at a mill awarded with ISO14001 environmental management certification.



Mission Zero:
*our promise to eliminate
any negative impact our company
may have on the environment
by the year 2020.*

5991004 Sept 2010